



IMAGE 2000
Floor Coating Systems

QUOTATION

Prepared For: Karyn Larson
Office Manager
Jenny Lind Veterans Memorial District
300 W. Daphne Street
Valley Springs, CA 95252
209-772-9650
e-mail jmemorial@att.net

Prepared By: Kenneth Mann
Image 2000 Floor Coatings
P.O. Box 753
Ione, CA 95640
209-736-1100
Fax: 736-9258
Cell: 304-2360

Date: 6/27/2021

Project Location: Same as above.

Scope of Work: Prepare concrete floor surfaces of designated area and install a two coat epoxy/urethane

Processes and Procedures

1. Machine scrub wash floor to clean and decontaminate surface.
2. Patch chips, cracks, seams and irregularities with #890 epoxy and grind smooth.
3. Sand existing coated surfaces to prep for the new coatings bonding.
4. Install Image 2000 #890 epoxy base coat/resurfacer 25 mils. thickness.
5. Install Image 2000 #68-100 series polyurethane top coat with broadcast of aluminum oxide non-slip granules.



IMAGE 2000
Floor Coating Systems

PRODUCTS DESCRIPTION

#890 Epoxy: Image 2000 #890 is a 100% solids urethane modified two component epoxy used for patching on the floor and for use as a base coat/resurfacer.

#68-100 Series Polyurethane: Image 2000 #68-100 series is a 70% solids two component, chemical resistant aliphatic polyurethane for the top coat of the Image 2000 system.

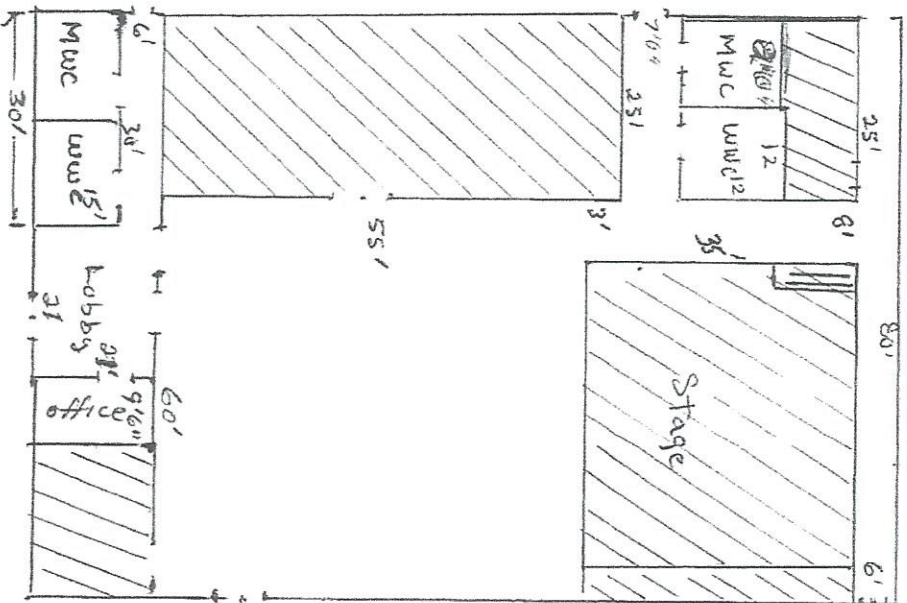
AREAS and PRICING

See area per site plan sketch dated 6/26/2021

Warranty: 5,841 sq. ft. @ \$3.60 per sq. ft. = \$21,027
Four years

Terms: 30% Deposit upon order
70% Balance upon completion

IMAGE 2000 Floor Coatings FLOOR PLAN SKETCH



Office mgr
 Attention: Karyn Larson
 DealerShip: Jenny Lind Veterans Memorial Dist.
IMAGE 2000
 FLOOR COATINGS SYSTEMS
 300 W. Daphne Street
 Valley Springs, CA 95852
 809-772-9650 Date: 6/26/2001
 Jmemorial@att.net
 (Signature)

PROPOSAL

Frank Garza

FRANK GARZA #2021-113.0 - VALLEY SPRINGS, CA				2021-113.0	
BID GENERATED	7/29/2021 9:16:35	OWNER/GC	Frank Garza	EXPIRES	10/27/2021
STORE #	2021-113.0	PHONE	(209) 483-3187	APPLICABLE DOCUMENTS	
PROJECT NAME	Frank Garza	PROJECT MANAGER	Frank Garza	BID SET	7/28/2021
SCOPE OF WORK	Polished Concrete	DIRECT	(209) 483-3187	ADDENDUM	N/A
ADDRESS	300 W Daphne St	EMAIL	e8garza@hotmail.com	DELTA	N/A
SPACE #	N/A	DNA CONTACT INFORMATION		LICENSE #	1017375
CITY	Valley Springs	ESTIMATOR/PM	ANDREW BILLINGS	START DATE	TBD
STATE	CA	DIRECT	(209) 817-3274	APPROX. END DATE	TBD
ZIP CODE	95252	EMAIL	ANDREW@DNA-RESTORING-CONCRETE.COM		

DEBRIS DISPOSAL	PROVIDED BY DNA	480V POWER	PROVIDED BY DNA	SLAB CONDITION	BARE CONCRETE
LIGHTING	PROVIDED BY OTHERS	WORKING HOURS	STANDARD	SITE CONDITION	OPEN REMODEL
WATER ACCESS	PROVIDED BY OTHERS	WAGE INFO	OUR PROPOSAL INCLUDES STANDARD WAGES, WORK HOURS, AND ASSUMES 10-HOUR WORK SHIFTS.	WAGE RATE	NON-UNION

			QTY	UOM	RATE	ALTERNATE	RATE	
1	Polished Concrete	LEVEL 4						
2	Mechanically grind concrete slab using 40 & 80G metal bond diamond abrasives to achieve the approved surface profile.	Main Floor Areas	5,788	SF	3.58		20,721	
3	Continue to hone concrete slab using Transitional, 100, & 200G resin bond diamond abrasives on both field and edges, while removing scratches from previous grits.							
4	Apply CONSOLUDEC LS densifier/hardener per manufacturer specifications.							
5	Continue to hone concrete slab using 400, 800, & 1500G diamond abrasives on both field edges, in preparation for the cleaning and sealing process per manufacturer specifications.							
6	Install two coats of CONSOLUDEC LS GUARD in accordance with manufacturer specifications.							
7	Complete the process by using a diamond impregnated twister pad, affixed to a high speed burnisher.							
8	COLOR: TBD							
9	GLOSS LEVEL: 4 - HIGHLY POLISHED - Near mirror like reflection.							
10	AGGREGATE EXPOSURE: Class A - Topical/Fine Aggregate							
11	METHOD: Dry grinding with 800-lb planetary grinders, using Hepa Filter systems.							
12	STAIN OPTION -		5,788	SF	0.80	4,630		
13	Epoxy Floor Coating	Kitchen & RR Areas	1,128	SF	5.88		6,633	
14	Mechanically grind concrete slab using specialized metal bond diamond abrasives to achieve proper a surface profile of - CSP 3/4.							
15	Apply Arizona Polymers Epoxy 400 base coat and broadcast chips until refusal per manufacturer specifications.							
16	Apply Arizona Polymers Epoxy 400 body coat per manufacturer specifications.							
17	Once body coat is cured, prepare slab for the final top coat per manufacturer specifications.							
18	Apply Arizona Polyurethane 100 top coat per manufacturer specifications.							
19	COLOR: TBD							
20	CURE TIME: 5-7 Days							
21	METHOD: Dry grinding using 800-lb planetary grinders using Hepa Filter Systems, capturing 99.9% of airborne dust							
22	PATCHWORK: Perform minor floor repair as identified in the red box at the bottom of this bid.							
23	GLOSS LEVEL: Medium							
24	THIS PROPOSAL EXCLUDES THE FOLLOWING:							
25	1). Remediation of concrete moisture emissions if the slab doesn't meet the manufacturer's system limitation.							
26	2). Moisture test - \$750.00 if performed by DNA.							
27	3). Sloping to drains, ramps or other elevation changes - Additional cost will apply if performed by DNA.							
28	4). Excessive slab remediation, un-sound legacy flooring removal and or cracking of more than 25 LF per ever 1,000 SQFT							
29	5). Slab remediation of oil, grease, sealers, curing compounds or other concrete contaminants.							
30	6). Temperature control, heating, cooling or ventilation of space where our work is being performed.							
31	7). Cleaning or protection of the final product, once our contracted scope of work is complete.							
32	Joint Filler		830	LF	3.00		2,490	
33	DNA to chase, clean out and install HI-TECH POLYUREA (or equal) joint filler in areas to receive scope, if applicable.							
34	COLOR: Gray (Reasonable Match)							
35	Mobile Power		1	EA	1,990		1,990	
36	DNA to provide 480V / 50 AMP / 3 Phase power, if not available onsite - required for grinding equipment							
37	Unless noted otherwise, GC to provide 110v power, adequate lighting, water, and dumpster access.							
38	* Minor patching included. Breakdown available upon request.							
39	** 1 mobilization included - Additional @ \$1,750 charge per trip							
40	TOTAL OPTIONS						\$	4,630
TOTAL BASE BID WITHOUT OPTIONS							\$	31,833

!! IMPORTANT INFORMATION LISTED BELOW !! !! IMPORTANT INFORMATION LISTED BELOW !! !! IMPORTANT INFORMATION LISTED BELOW !! !! IMPORTANT INFORMATION LISTED BELOW !!

STANDARD EXCLUSIONS - UNLESS NOTED ABOVE IN OUR BID/SCOPE OF WORK:
A) SLAB CONDITION: Water Proofing, Crack Isolation Membranes, Expansion Joint Fill/Sealants, Cleaning, Waxing, Protecting of surroundings and Vacuuming, Moisture, Bond and Alkalinity Testing, Moisture Remediation, Scaffolding, Lifting Equipment, Heaters, Extensive Floor Preparation, Underlayment, Leveling and Priming, Grout Coats, Gloss & Slip Meter Testing, Post Installation Protection, Lighting, and Dumpsters. ANY AND ALL FORMS AND MANNER OF PAID-IF-PAID
B) SLAB REMEDIATION: Clean, solid concrete substrate with no coatings, including residual coatings and curing sealers is assumed with only minor patching required; defined as 15 golf ball size spalls/holes per 1,000 square feet. Additional labor, equipment or materials may require written authorization before proceeding with such extra work.
C) CONTROL JOINTS: When Joint Filler is not excluded or priced separately; DNA will fill ¼ inch or smaller saw-cut control joints that are in good repair with squared off shoulders. Repairing control joints prior to filling is extra work beyond the base bid.
D) FLOOR PROTECTION: DNA is not responsible for floor protection after completion. Any damages that might happen after departure, may result in additional charges.

Customer Agreement

OWNER/GC REPRESENTATIVE PRINTED _____ DATE _____

SIGNATURE _____



BID 2021-113.0 FRANK GARZA #2021-113.0 - VALLEY SPRINGS, CA

PROPOSAL

Frank Garza

FRANK GARZA #2021-113.1 - VALLEY SPRINGS, CA **2021-113.1**

BID GENERATED	7/29/2021 9:26:27	OWNER/GC	Frank Garza	EXPIRES	10/27/2021	APPLICABLE DOCUMENTS	0
STORE #	2021-113.1	PHONE	(209) 483-3187				0
PROJECT NAME	Frank Garza	PROJECT MANAGER	Frank Garza	BID SET	7/28/2021		0
SCOPE OF WORK	Grind and Seal	DIRECT	(209) 483-3187	ADDENDUM	N/A		0
ADDRESS	300 W Daphne St	EMAIL	e8garza@hotmail.com	DELTA	N/A		0
SPACE #	N/A	DNA CONTACT INFORMATION		LICENSE #	1017375		0
CITY	Valley Springs	ESTIMATOR/PM	ANDREW BILLINGS	START DATE	TBD		0
STATE	CA	DIRECT	(209) 817-3274	APPROX. END DATE	TBD		0
ZIP CODE	95252	EMAIL	ANDREW@DNA-RESTORING-CONCRETE.COM				0

SITE INFORMATION			
DEBRIS DISPOSAL	PROVIDED BY DNA	480V POWER	PROVIDED BY DNA
LIGHTING	PROVIDED BY OTHERS	WORKING HOURS	STANDARD
WATER ACCESS	PROVIDED BY OTHERS	WAGE INFO	OUR PROPOSAL INCLUDES STANDARD WAGES, WORK HOURS, AND ASSUMES 10-HOUR WORK SHIFTS.
SLAB CONDITION	BARE CONCRETE	SITE CONDITON	OPEN REMODEL
WAGE RATE	NON-UNION		

		QTY	UOM	RATE	ALTERNATE	RATE	
1	Sealed Concrete						
2	Mechanically grind concrete slab using 40G metal bond diamond abrasives to achieve the approved surface profile.	5,788	SF	2.60		15,049	
3	Continue to hone concrete slab using 80G metal bond diamond abrasives on both field and edges, in preparation for the densification process, per manufacturer specifications.						
4	Apply POLY 250 sealer per manufacturer specifications.						
5	If needed, complete the process by using a diamond impregnated twister pad, affixed to a high speed burnisher.						
6	COLOR: Natural						
7	GLOSS LEVEL: 2 - SATIN - Reflection of objects have a matte appearance.						
8	AGGREGATE EXPOSURE: Class A - Topical/Fine Aggregate						
9	METHOD: Dry grinding with 800+lb planetary grinders, using Hepa Filter systems.						
10	STAIN OPTION -	5,788	SF	0.80	4,630		
11	Epoxy Floor Coating						
12	Mechanically grind concrete slab using specialized metal bond diamond abrasives to achieve proper a surface profile of - CSP 3/4.	1,128	SF	5.88		6,633	
13	Apply Arizona Polymers Epoxy 400 base coat and broadcast chips until refusal per manufacturer specifications.						
14	Apply Arizona Polymers Epoxy 400 body coat per manufacturer specifications.						
15	Once body coat is cured, prepare slab for the final top coat per manufacturer specifications.						
16	Apply Arizona Polyurethane 100 top coat per manufacturer specifications.						
17	COLOR: TBD						
18	CURE TIME: 5-7 Days						
19	METHOD: Dry grinding using 800+lb planetary grinders using Hepa Filter Systems, capturing 99.9% of airborne dust						
20	PATCHWORK: Perform minor floor repair as identified in the red box at the bottom of this bid.						
21	GLOSS LEVEL: Medium						
22	THIS PROPOSAL EXCLUDES THE FOLLOWING:						
23	1). Remediation of concrete moisture emissions if the slab doesn't meet the manufacturer's system limitation.						
24	2). Moisture test - \$750.00 if performed by DNA.						
25	3). Sloping to drains, ramps or other elevation changes - Additional cost will apply if performed by DNA.						
26	4). Excessive slab remediation, un-sound legacy flooring removal and or cracking of more than 25 LF per ever 1,000 SQFT						
27	5). Slab remediation of oil, grease, sealers, curing compounds or other concrete contaminates.						
28	6). Temperature control, heating, cooling or ventilation of space where our work is being performed.						
29	7). Cleaning or protection of the final product, once our contracted scope of work is complete.						
30							
31	Joint Filler	830	LF	3.00		2,490	
32	DNA to chase, clean out and install HI-TECH POLYUREA (or equal) joint filler in areas to receive scope, if applicable.						
33	COLOR: Gray (Reasonable Match)						
34							
35	Mobile Power	1	EA	1,411		1,411	
36	DNA to provide 480V / 50 AMP / 3 Phase power, if not available onsite - required for grinding equipment						
37	Unless noted otherwise, GC to provide 110v power, adequate lighting, water, and dumpster access.						
38							
39							
40							
41							
42							
43							
44							
45							
46							
47							
48							
49	* Minor patching included. Breakdown available upon request.						
50	** 1 mobilization included - Additional @ \$1,750 charge per trip						
						TOTAL OPTIONS	\$ 4,630

TOTAL BASE BID WITHOUT OPTIONS \$ 25,582

STANDARD EXCLUSIONS - UNLESS NOTED ABOVE IN OUR BID/SCOPE OF WORK:
 A) SLAB CONDITION: Water Proofing, Crack Isolation Membranes, Expansion Joint Fill/Sealants, Cleaning, Waxing, Protecting of surroundings and Vacuuming, Moisture, Bond and Alkalinity Testing, Moisture Remediation, Scaffolding, Lifting Equipment, Heaters, Extensive Floor Preparation, Underlayment, Leveling and Priming, Grout Coats, Gloss & Slip Meter Testing, Post Installation Protection, Lighting, and Dumpsters. ANY AND ALL FORMS AND MANNER OF PAID-IF-PAID
CONTRACT CLAUSES
 B) SLAB REMEDIATION: Clean, solid concrete substrate with no coatings, including residual coatings and curing sealers is assumed with only minor patching required; defined as 15 golf ball size spalls/holes per 1,000 square feet. Additional labor, equipment or materials may require written authorization before proceeding with such extra work.
 C) CONTROL JOINTS: When Joint Filler is not excluded or priced separately; DNA will fill ¼ inch or smaller saw-cut control joints that are in good repair with squared off shoulders. Repairing control joints prior to filling is extra work beyond the base bid.
 D) FLOOR PROTECTION: DNA is not responsible for floor protection after completion. Any damages that might happen after departure, may result in additional charges.
Customer Agreement

OWNER/GC REPRESENTATIVE PRINTED _____
 SIGNATURE _____

DATE _____



BID 2021-113.1 FRANK GARZA #2021-113.1 - VALLEY SPRINGS, CA

Frank Garza

FRANK GARZA #2021-113.2 - VALLEY SPRINGS, CA				2021-113.2		
BID GENERATED	7/29/2021 9:19:36	OWNER/GC	Frank Garza	EXPIRES	10/27/2021	
STORE #	2021-113.2	PHONE	(209) 483-3187	APPLICABLE DOCUMENTS		
PROJECT NAME	Frank Garza	PROJECT MANAGER	Frank Garza	BID SET	7/28/2021	
SCOPE OF WORK	Epoxy Chips System	DIRECT	(209) 483-3187	ADDENDUM	N/A	
ADDRESS	300 W Daphne St	EMAIL	e8garza@hotmail.com	DELTA	N/A	
SPACE #	N/A	DNA CONTACT INFORMATION			LICENSE #	1017375
CITY	Valley Springs	ESTIMATOR/PM	ANDREW BILLINGS	START DATE	TBD	
STATE	CA	DIRECT	(209) 817-3274	APPROX. END DATE	TBD	
ZIP CODE	95252	EMAIL	ANDREW@DNA-RESTORING-CONCRETE.COM			

DEBRIS DISPOSAL		PROVIDED BY DNA	SITE INFORMATION		480V POWER	PROVIDED BY DNA	SLAB CONDITION	BARE CONCRETE	
LIGHTING		PROVIDED BY OTHERS	WORKING HOURS		STANDARD	SITE CONDITION		OPEN REMODEL	
WATER ACCESS		PROVIDED BY OTHERS	WAGE INFO		OUR PROPOSAL INCLUDES STANDARD WAGES, WORK HOURS, AND ASSUMES 10-HOUR WORK SHIFTS.			WAGE RATE	NON-UNION

	QTY	UOM	RATE	ALTERNATE	RATE
1 Epoxy Floor Coating	6,916	SF	5.88		40,666
2 Mechanically grind concrete slab using specialized metal bond diamond abrasives to achieve proper 3 surface profile of - CSP 3/4. 4 Apply Arizona Polymers Epoxy 400 base coat and broadcast chips until refusal per manufacturer specifications. 5 Apply Arizona Polymers Epoxy 400 body coat per manufacturer specifications. 6 Once body coat is cured, prepare slab for the final top coat per manufacturer specifications. 7 Apply Arizona Polyurethane 100 top coat per manufacturer specifications. 8 9 COLOR: TBD 10 CURE TIME: 5-7 Days 11 METHOD: Dry grinding using 800-lb planetary grinders using Hepa Filter Systems, capturing 99.9% of airborne dust 12 PATCHWORK: Perform minor floor repair as identified in the red box at the bottom of this bid. 13 GLOSS LEVEL: Medium 14 15 THIS PROPOSAL EXCLUDES THE FOLLOWING: 16 1). Remediation of concrete moisture emissions if the slab doesn't meet the manufacturer's system limitation. 17 2). Moisture test - \$750.00 if performed by DNA. 18 3). Sloping to drains, ramps or other elevation changes - Additional cost will apply if performed by DNA. 19 4). Excessive slab remediation, un-sound legacy flooring removal and or cracking of more than 25 LF per ever 1,000 SQFT 20 5). Slab remediation of oil, grease, sealers, curing compounds or other concrete contaminants. 21 6). Temperature control, heating, cooling or ventilation of space where our work is being performed. 22 7). Cleaning or protection of the final product, once our contracted scope of work is complete. 23 24 25 26 27 28 29 30 31 32 33 34 35 36 37 38 39 40 41 Joint Filler					
42 DNA to chase, clean out and install HI-TECH POLYUREA (or equal) joint filler in areas to receive scope, if applicable.	830	LF	3.00		2,490
43 COLOR: Gray (Reasonable Match)					
44					
45 Mobile Power	1	EA	2,500		2,500
46 DNA to provide 480V / 50 AMP / 3 Phase power, if not available onsite - required for grinding equipment					
47 Unless noted otherwise, GC to provide 110v power, adequate lighting, water, and dumpster access.					
48					
49 * Minor patching included. Breakdown available upon request.					
50 ** 1 mobilization included - Additional @ \$1,750 charge per trip					
TOTAL OPTIONS					\$ -
TOTAL BASE BID WITHOUT OPTIONS					\$ 45,666

STANDARD EXCLUSIONS - UNLESS NOTED ABOVE IN OUR BID/SCOPE OF WORK:
 A) SLAB CONDITION: Water Proofing, Crack Isolation Membranes, Expansion Joint Fill/Sealants, Cleaning, Waxing, Protecting of surroundings and Vacuuming, Moisture, Bond and Alkalinity Testing, Moisture Remediation, Scaftolding, Lifting Equipment, Heaters, Extensive Floor Preparation, Underlayment, Leveling and Priming, Grout Coats, Gloss & Slip Meter Testing, Post Installation Protection, Lighting, and Dumpsters. ANY AND ALL FORMS AND MANNER OF PAID-IF-PAID
 B) SLAB REMEDIATION: Clean, solid concrete substrate with no coatings, including residual coatings and curing sealers is assumed with only minor patching required; defined as 15 golf ball size spalls/holes per 1,000 square feet. Additional labor, equipment or materials may require written authorization before proceeding with such extra work.
 C) CONTROL JOINTS: When joint filler is not excluded or priced separately, DNA will fill ¼ inch or smaller saw-cut control joints that are in good repair with squared off shoulders. Repairing control joints prior to filling is extra work beyond the base bid.
 D) FLOOR PROTECTION: DNA is not responsible for floor protection after completion. Any damages that might happen after departure, may result in additional charges.

Customer Agreement

OWNER/GC REPRESENTATIVE PRINTED _____ DATE _____
 SIGNATURE _____

